



General Certificate of Secondary Education  
Foundation Tier and Higher Tier  
January 2013

**Geography  
(Specification B)**

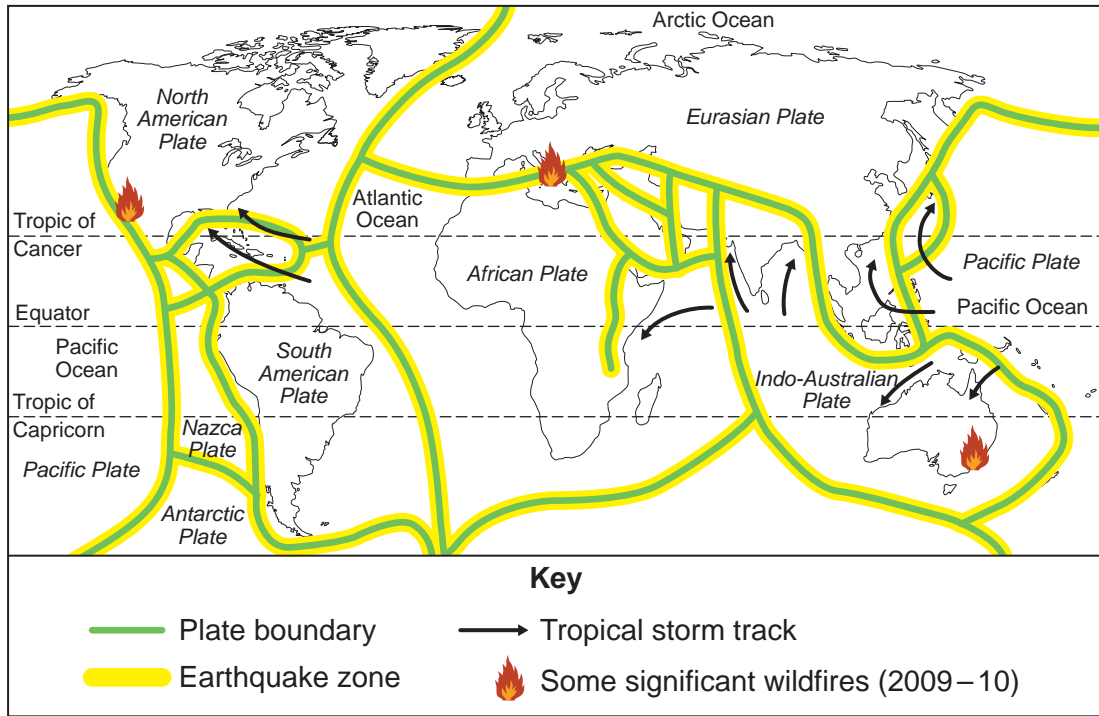
**40352F & 40352H**

**Unit 2 Hostile World**

**Insert**

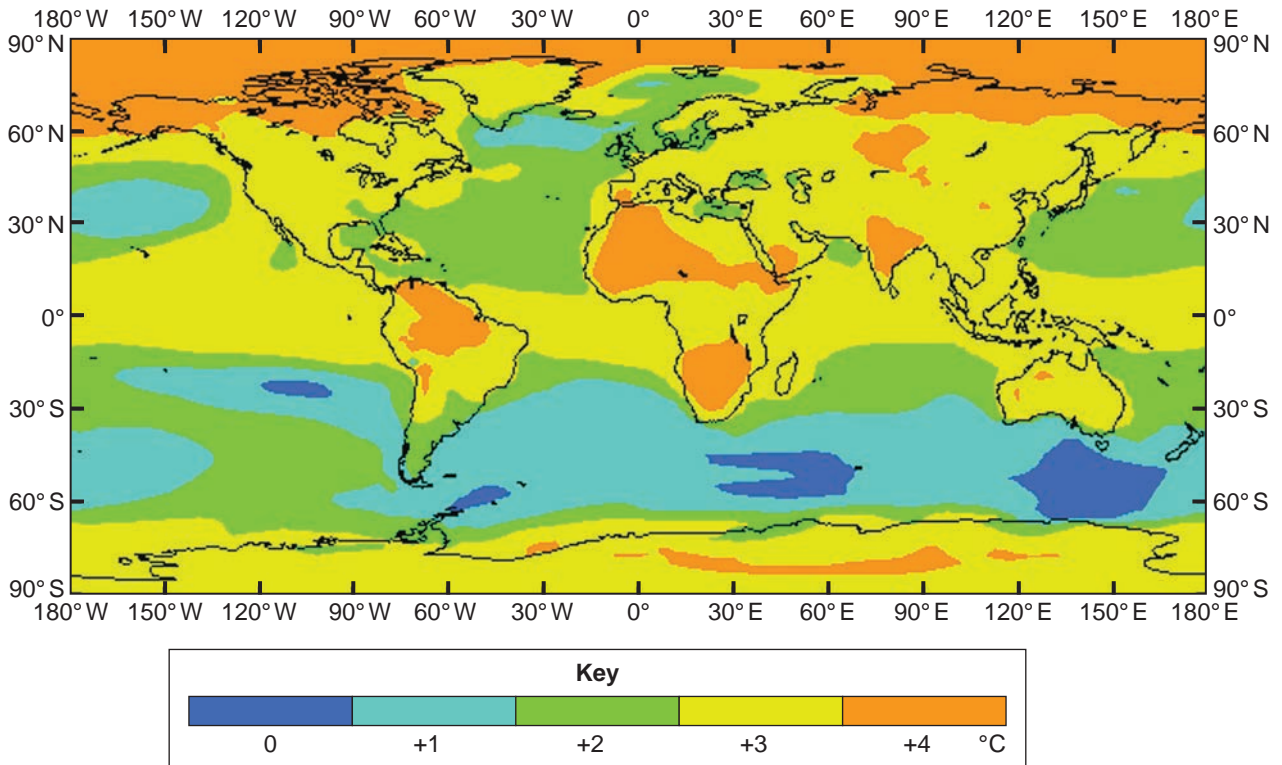
For use with Question 1

Figure 1



For use with Question 1

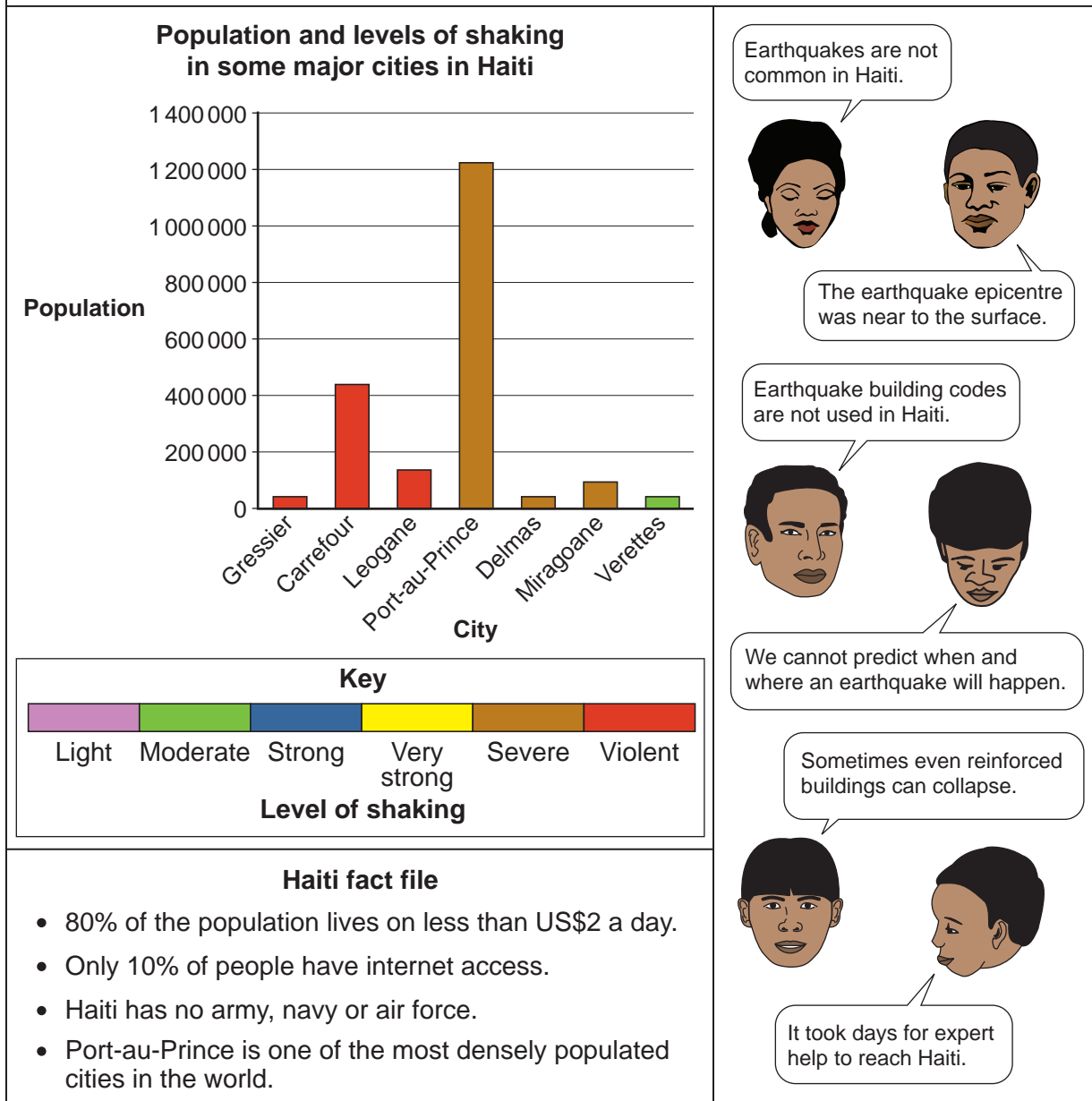
Figure 2



## For use with Question 4

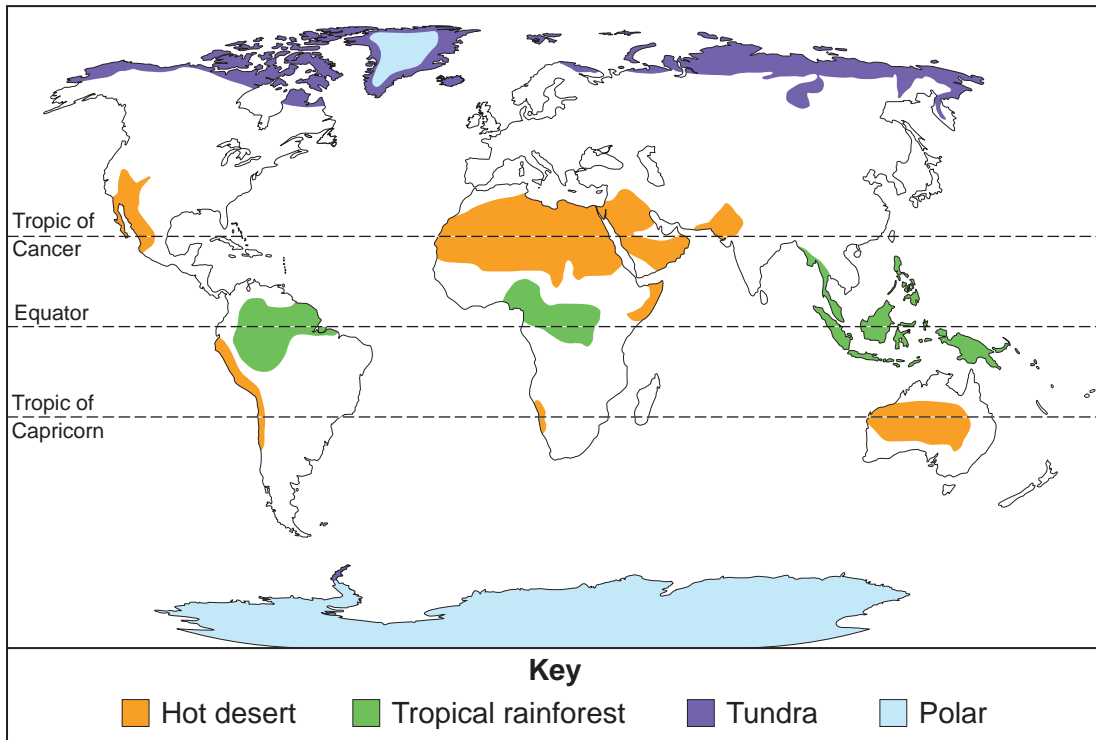
Figure 7

In January 2010 an earthquake of strength 7.0 on the Richter scale happened in Haiti. About 220 000 people died and 1.2 million were made homeless. The effects of the earthquake were twice as bad as any previous earthquake of the same strength in Haiti.



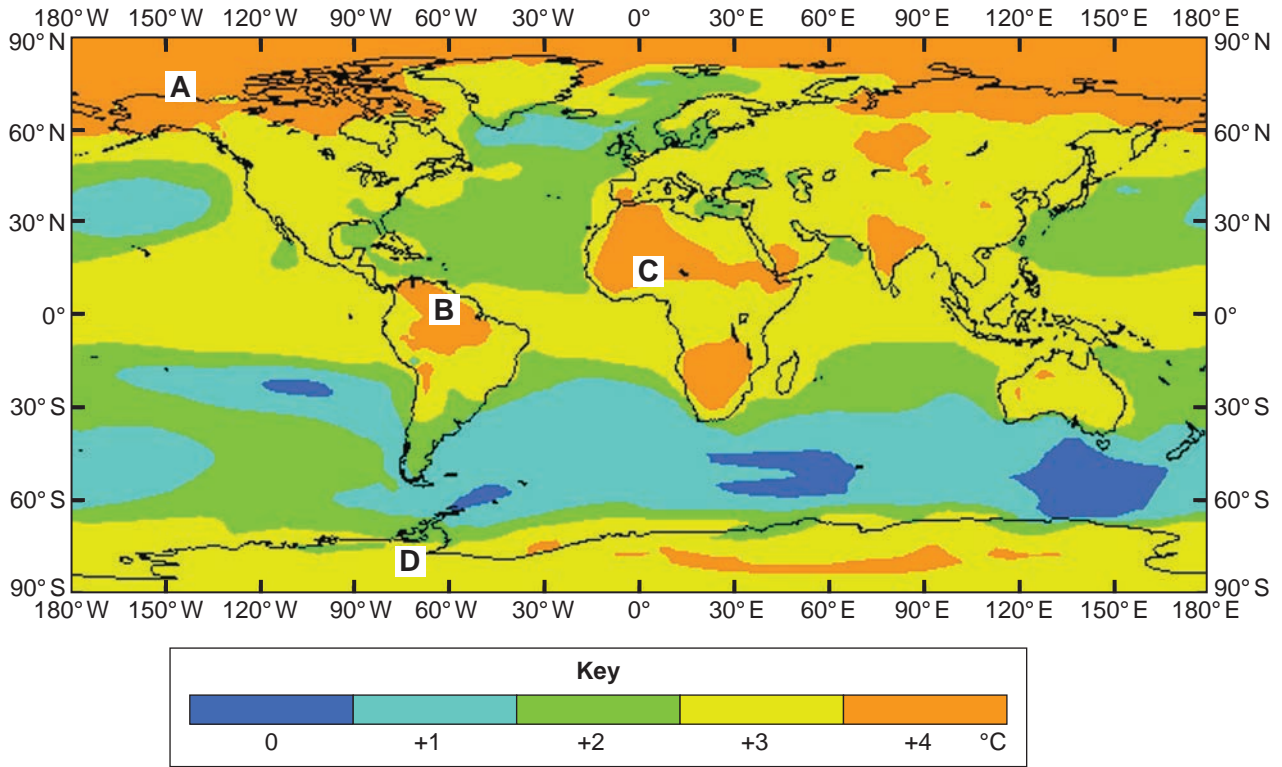
For use with Question 5

Figure 8



For use with Question 5

Figure 9



**There is no source material printed on this page**

**There is no source material printed on this page**

**There is no source material printed on this page**

#### ACKNOWLEDGEMENT OF COPYRIGHT-HOLDERS AND PUBLISHERS

Permission to reproduce all copyright material has been applied for. In some cases, efforts to contact copyright-holders have been unsuccessful and AQA will be happy to rectify any omissions of acknowledgements in future papers if notified.

Figures 2 and 9: <http://www.climate-charts.com> Hadley Centre for Climate Prediction and Research, The Met. Office  
Contains public sector information licensed under the Open Government Licence V1.0

Figures 7 and 8: <http://www.usgs.gov>