

| | | | | | | | | | | |
|---------------------|--|--|--|--|--|------------------|--|--|--|--|
| Centre Number | | | | | | Candidate Number | | | | |
| Surname | | | | | | | | | | |
| Other Names | | | | | | | | | | |
| Candidate Signature | | | | | | | | | | |



General Certificate of Secondary Education
Foundation Tier
January 2013

Geography (Specification B)

40352F

F

Unit 2 Hostile World

Friday 25 January 2013 9.00 am to 10.00 am

For this paper you must have:

- the insert (enclosed).

You may use a calculator.

Time allowed

- 1 hour

Instructions

- Use black ink or black ball-point pen. You may use pencil for maps, diagrams and graphs.
- Fill in the boxes at the top of this page.
- Answer **either** Section A (Questions 1 to 4) **or** Section B (Questions 5 to 8).
- You must answer the questions in the spaces provided. Do not write outside the box around each page or on blank pages.
- Do all rough work in this book. Cross through any work you do not want to be marked.
- Use your case studies to support your answers where appropriate.

Information

- The marks for questions are shown in brackets.
- The maximum mark for this paper is 56.
- You are reminded of the need for good English and clear presentation in your answers. Where applicable, questions should be answered in continuous prose. Quality of Written Communication will be assessed in all answers.
- Spelling, Punctuation and Grammar will be assessed in Questions 2 (a)(ii) and 4 (a)(ii) in Section A and in Questions 6 (a)(ii) and 8 (b) in Section B. The marks for Spelling, Punctuation and Grammar (**SPaG**) are shown below the mark allocation for each question.

| For Examiner's Use | |
|---------------------|------|
| Examiner's Initials | |
| Question | Mark |
| 1a | |
| 1b | |
| 1c | |
| 1d | |
| 2a | |
| 2b | |
| 3a | |
| 3b | |
| 3c | |
| 4a | |
| 5a | |
| 5b | |
| 5c | |
| 5d | |
| 6a | |
| 6b | |
| 7a | |
| 7b | |
| 7c | |
| 8a | |
| 8b | |
| TOTAL | |



J A N 1 3 4 0 3 5 2 F 0 1

Answer **either** Section A (Questions 1 to 4) **or** Section B (Questions 5 to 8).

Section A – Living with Natural Hazards

Use case studies to support your answers where appropriate.

Total for this question: 16 marks

1 Study **Figure 1** on the insert. **Figure 1** shows information about natural hazards in different parts of the world.

1 (a) (i) Use **Figure 1** to decide which **two** of the following statements are correct.

Tick the **two** correct boxes.

| | |
|--|--------------------------|
| All tropical storm tracks start on the Equator. | <input type="checkbox"/> |
| Most tropical storm tracks are north of the Equator. | <input type="checkbox"/> |
| All tropical storm tracks start between the Tropics. | <input type="checkbox"/> |
| There are no tropical storm tracks south of the Equator. | <input type="checkbox"/> |

(2 marks)

1 (a) (ii) Use **Figure 1** to complete the sentences below.

Circle the correct answer in **each** set of brackets.

All earthquake zones are found on the [**centre** / **boundaries** / **east**] of tectonic plates. Most of the earthquake zones are in [**short** / **long** / **straight**] narrow belts over the earth. One of these belts circles the whole of the

[**Atlantic** / **Arctic** / **Pacific**] Ocean.

(3 marks)



1 (b) Explain why **one** of the types of natural hazard shown in **Figure 1** occurs.

You may use a diagram.

Chosen natural hazard

.....

.....

.....

.....

.....

.....

.....

.....

.....

.....

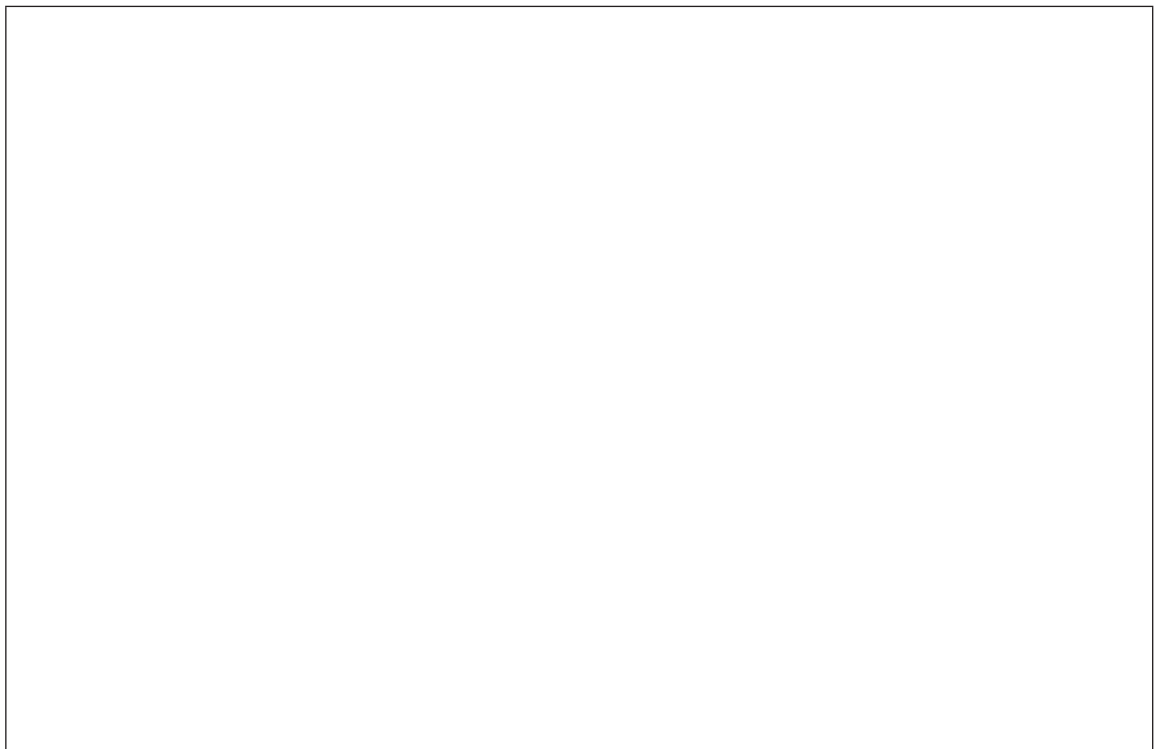
(4 marks)

Extra space

.....

.....

.....



Turn over ►



1 (c) Study **Figure 2** on the insert. **Figure 2** shows how surface temperatures might change by 2070.

1 (c) (i) What is the predicted change to the surface temperature of the ocean at 60° south, 150° east?

.....

(1 mark)

1 (c) (ii) What is the predicted change to the surface temperature of the land at 15° north, 15° east?

.....

(1 mark)

1 (d) Describe the possible effects of temperature increase on **either** tropical storms or wildfires.

Use **Figure 1** and **Figure 2** and your own knowledge.

.....
.....
.....
.....
.....
.....
.....
.....
.....
.....
.....
.....
.....

(5 marks)

Extra space

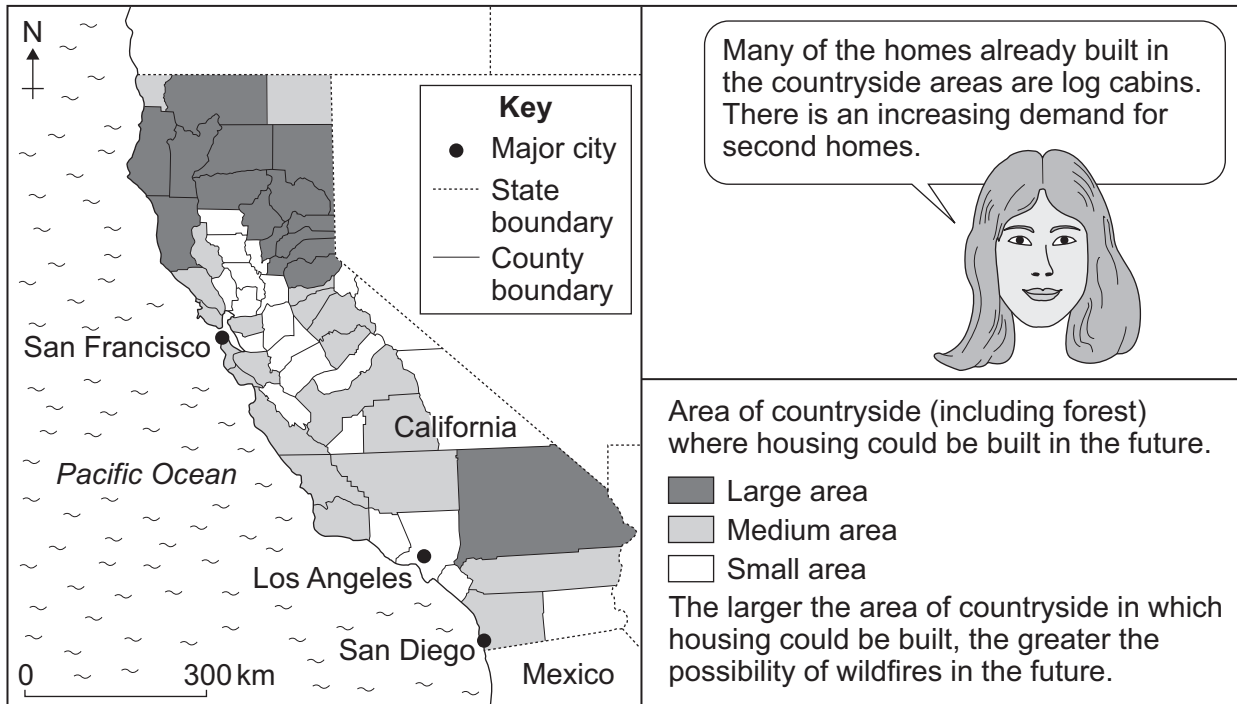
.....
.....
.....



Total for this question: 15 marks

- 2 (a)** Study **Figure 3**. **Figure 3** shows information about the possible future development of housing in countryside areas in the counties of California (United States).

Figure 3



- 2 (a) (i)** Complete the following sentences. Circle the correct answer in each set of brackets.

Use **Figure 3**.

Many counties in [**central** / **northern**] California have a large area of countryside in which housing could be built.

Only one county in the southern half of California has a [**large** / **small**] area of countryside in which housing could be built.

The county in which [**Los Angeles** / **San Diego**] is situated has a small area of countryside in which housing could be built.

(3 marks)

Question 2 continues on the next page

Turn over ►



2 (a) (ii) The cost of damage from wildfires and the cost of fire fighting could increase in the future. Explain why.

Use **Figure 3** and your own knowledge.

.....

.....

.....

.....

.....

.....

.....

.....

.....

.....

.....

.....

(5 marks)
SPaG: 3 marks

Extra space

.....

.....

.....

.....



2 (b) Study **Figure 4**. **Figure 4** shows part of a newspaper article about a scheme to increase wildfire awareness in the Western United States.

Figure 4

Wildfire Awareness Week

Monday, 3 May 2010

This week five states are having a Wildfire Awareness Week. There have been 12 states that in recent years have each had a week to tell people about wildfire awareness. If there were an agreement from all states to have the same week each year, there could be a national campaign to increase public awareness. As part of their awareness week, the California Department of Forestry and Fire Protection has produced a series of videos called 'Cal Fire TV'. This could be used in other states.

Describe **two** ways in which greater 'wildfire awareness' can help to reduce the damage caused by wildfires.

1

.....

.....

2

.....

.....

(4 marks)

15

Turn over for the next question

Turn over ►



Total for this question: 14 marks

- 3 (a)** Study **Figure 5**. **Figure 5** shows information about a tropical storm (Cyclone Sidr) and Bangladesh (a less developed country).

Figure 5

Figure 5, which shows information about a tropical storm (Cyclone Sidr) and Bangladesh, is not reproduced here due to third-party copyright constraints.

- 3 (a) (i)** Complete **Figure 5**.

Use the information below.

Number of people in the district of Khulna affected by Cyclone Sidr = 800 000

(1 mark)



3 (a) (ii) Complete the paragraph below.

Choose the **three** correct answers from the list below.

- 15
 - 300
 - north
- 16
 - 500
 - south

Cyclone Sidr moved across the Bay of Bengal and made landfall in Bangladesh on November 2007. As Cyclone Sidr moved inland, it veered to the north-east and affected areas up to kilometres inland.

(3 marks)

3 (a) (iii) Tick the correct box to show whether **each** of the following statements is **true** or **false**.

Use **Figure 5**.

| Statement |
|---|
| Only districts with coastlines on the Bay of Bengal were affected by Cyclone Sidr. |
| Cyclone Sidr affected over 700 000 people in each of the coastal districts of Bangladesh. |
| When Cycle Sidr tracked inland fewer people were affected. |

| True | False |
|--------------------------|--------------------------|
| <input type="checkbox"/> | <input type="checkbox"/> |
| <input type="checkbox"/> | <input type="checkbox"/> |
| <input type="checkbox"/> | <input type="checkbox"/> |

(3 marks)

3 (b) Describe the effects of tropical storms on the natural environment.

.....

.....

.....

.....

.....

.....

(3 marks)

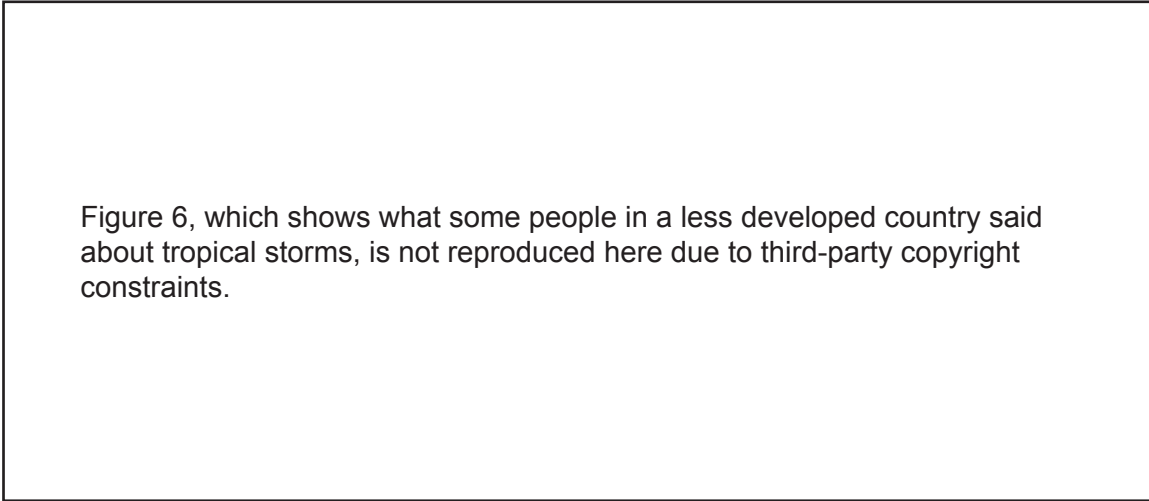
Question 3 continues on the next page

Turn over ►



3 (c) Study **Figure 6**. **Figure 6** shows what some people in a less developed country said about tropical storms.

Figure 6



Describe **two** ways of reducing the damaging effects of tropical storms in less developed countries.

1

.....

.....

.....

2

.....

.....

.....

(4 marks)

| |
|-----------|
| |
| 14 |



Total for this question: 11 marks

4 Study **Figure 7** on the insert. **Figure 7** shows information about an earthquake in Haiti in 2010.

4 (a) (i) Use **Figure 7** to decide which **two** of the following statements are correct.

Tick the **two** correct boxes.

| | |
|---|--------------------------|
| The largest city with violent shaking was Carrefour. | <input type="checkbox"/> |
| There were three cities with a population of over 400 000 that had severe shaking or greater. | <input type="checkbox"/> |
| There were two cities with a population of over 400 000 that had severe shaking or greater. | <input type="checkbox"/> |
| The largest city with violent shaking was Leogane. | <input type="checkbox"/> |

(2 marks)

Question 4 continues on the next page

Turn over ►



Answer **either** Section A (Questions 1 to 4) **or** Section B (Questions 5 to 8).

Section B – The Challenge of Extreme Environments

Use case studies to support your answers where appropriate.

Total for this question: 16 marks

5 (a) Study **Figure 8** on the insert. **Figure 8** shows extreme environments in different parts of the world.

5 (a) (i) Use **Figure 8** to decide which **two** of the following statements are correct.

Tick the **two** correct boxes.

| | |
|--|--------------------------|
| All areas of tropical rainforest are north of the Equator. | <input type="checkbox"/> |
| All areas of tropical rainforest are between the Tropics. | <input type="checkbox"/> |
| No areas of tropical rainforest are on the Equator. | <input type="checkbox"/> |
| Many areas of tropical rainforest are on the Equator. | <input type="checkbox"/> |

(2 marks)

5 (a) (ii) Use **Figure 8** to complete the sentences below.

Circle the correct answer in **each** set of brackets.

Polar environments are found in the [**higher** / middle / lower] latitudes.

Tundra environments are found on the [**west** / edges / centre] of continents.

Most hot desert environments are found in the [**Equatorial** / Tropical / Polar] regions.

(3 marks)

Question 5 continues on the next page

Turn over ►



5 (b) Explain how the climate affects the vegetation in **one** of the extreme environments shown on **Figure 8**.

Chosen extreme environment

.....
.....
.....
.....
.....
.....
.....
.....

(4 marks)

Extra space

.....
.....
.....

5 (c) Study **Figure 9** on the insert. **Figure 9** shows how surface temperatures might change by 2070.

5 (c) (i) What is the predicted change to the surface temperature of the ocean at 60° south, 150° east?

.....
(1 mark)

5 (c) (ii) What is the predicted change to the surface temperature of the land at 15° north, 15° east?

.....
(1 mark)



Total for this question: 14 marks

- 6 (a)** Study **Figure 10**. **Figure 10** gives information about the risk of desertification in Spain.

Figure 10

Figure 10, which shows a map of Spain containing information about the risk of desertification in Spain, is not reproduced here due to third-party copyright constraints.

Spain warns ‘desert is spreading’

Large areas of Spain are at risk of being turned into a desert. The population along the Mediterranean coast of Spain continues to increase and more holiday homes and other tourist developments are built each year. This is putting pressure on water resources.

- 6 (a) (i)** Use **Figure 10** to decide which **two** of the following statements are correct.

Tick the **two** correct boxes.

Many of the areas with a very high risk of desertification are found in the north of Spain.

There are areas with a very high risk of desertification along the border with Portugal.

Many of the areas with a very high risk of desertification are found along the Mediterranean coast.

Many of the areas with a very high risk of desertification are found in the south-east of Spain.

| |
|--------------------------|
| <input type="checkbox"/> |
| <input type="checkbox"/> |
| <input type="checkbox"/> |
| <input type="checkbox"/> |

(2 marks)



6 (a) (ii) Explain why some areas are at risk from desertification.

Use **Figure 10** and your own knowledge.

.....

.....

.....

.....

.....

.....

.....

.....

.....

.....

.....

.....

(5 marks)
SPaG: 3 marks

Extra space

.....

.....

.....

.....

Question 6 continues on the next page

Turn over ►



6 (b) Study **Figure 11**. **Figure 11** shows part of a newspaper article about a scheme to reduce desertification.

Figure 11

Scheme to reduce desertification

The Government of a less developed country plans to plant 45 million trees. The scheme involves reforesting more than 61 000 hectares. A charity will train local people in soil conservation techniques.

Describe **two** ways in which this scheme can help to reduce desertification.

1

.....

.....

.....

.....

2

.....

.....

.....

(4 marks)

| |
|----|
| 14 |
|----|



Total for this question: 12 marks

- 7** Study **Figure 12**. **Figure 12** shows information about deforested areas of the Amazon region in Brazil in 2006 and in 2030 (estimate).

Figure 12

Figure 12, which shows information about deforested areas of the Amazon region in Brazil in 2006 and in 2030 (estimate), is not reproduced here due to third-party copyright constraints.

- 7 (a) (i)** Use **Figure 12** to complete the following paragraph.

Choose the **three** correct answers from the list below.

100

Equator

south-east

1500

Tropic of Capricorn

north-west

Up to 2006, most deforestation took place in the of the Amazon region of Brazil. Up to 2006 most deforestation was to the south of the and was within kilometres of the coast of Brazil.

(3 marks)

Question 7 continues on the next page

Turn over ►



7 (a) (ii) Tick the correct box to show whether **each** of the following statements is **true** or **false**.

Use **Figure 12**.

| Statement | True | False |
|---|------|-------|
| By 2030 no areas of tropical rainforest are expected to remain along the coast of Brazil. | | |
| By 2030 the amount of deforested land is expected to increase. | | |
| In 2030 no areas in the north of the Amazon region are expected to be deforested. | | |

(3 marks)

7 (b) Describe **one** effect of deforestation on the natural environment.

.....

.....

.....

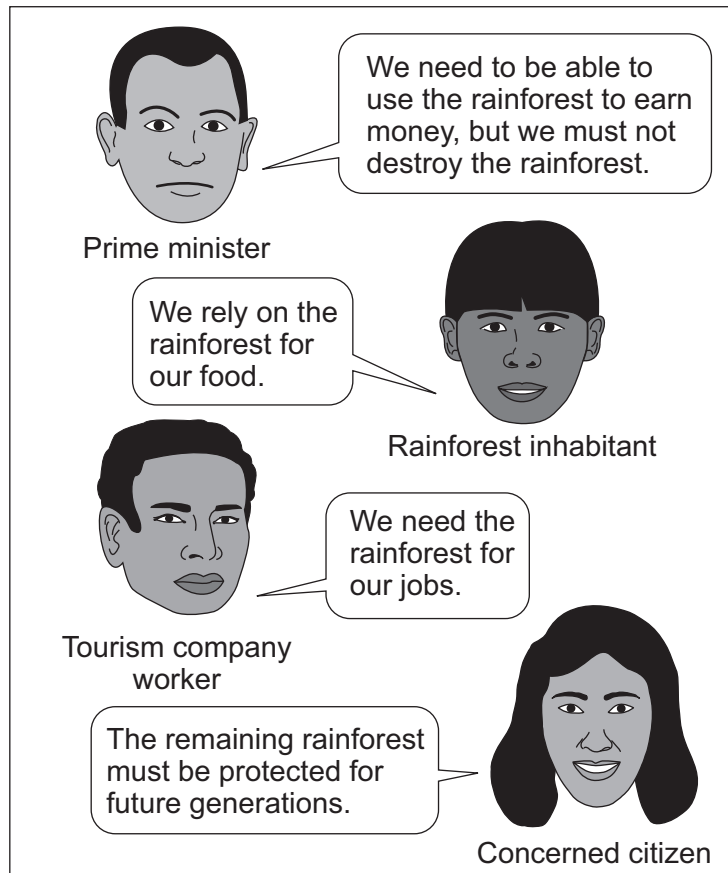
.....

(2 marks)



7 (c) Study Figure 13. Figure 13 shows what some people say about the use of tropical rainforest.

Figure 13



Describe **two** ways in which the tropical rainforest environment can be used sustainably.

1

.....

.....

.....

.....

2

.....

.....

.....

.....

(4 marks)

| |
|----|
| |
| 12 |

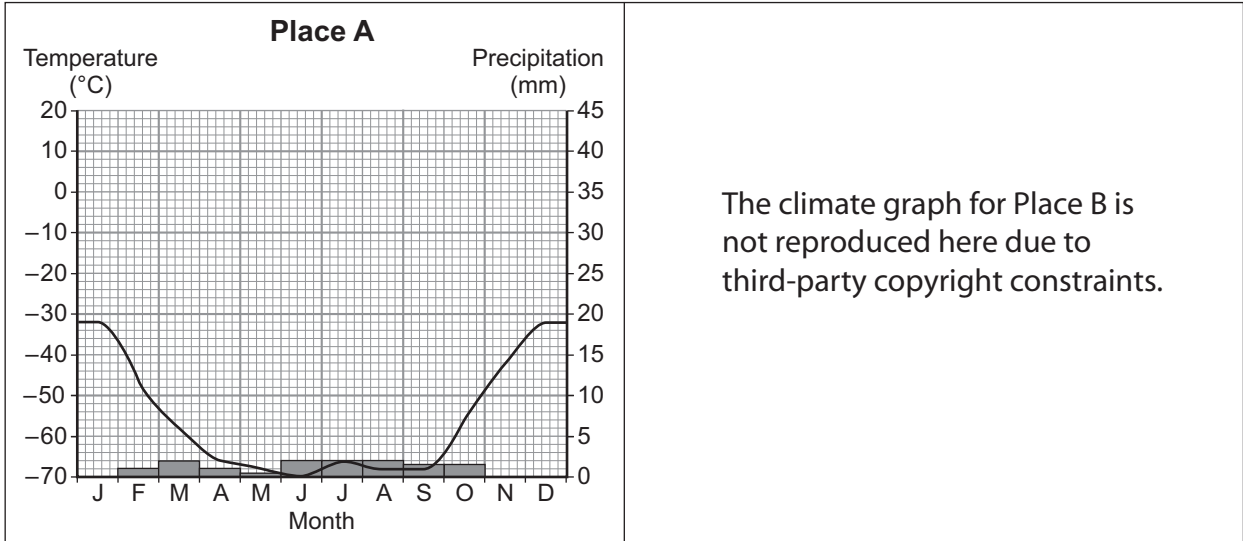
Turn over ►



Total for this question: 14 marks

8 (a) Study **Figure 14**. **Figure 14** shows climate graphs for two places (**A** and **B**) in cold environments.

Figure 14



The climate graph for Place B is not reproduced here due to third-party copyright constraints.

8 (a) (i) Complete **Figure 14**.

Use the information below.

Precipitation at Place B in September = 23mm

(1 mark)

8 (a) (ii) Describe the differences between the temperatures of **Place A** and **Place B**.

.....

.....

.....

.....

.....

.....

.....

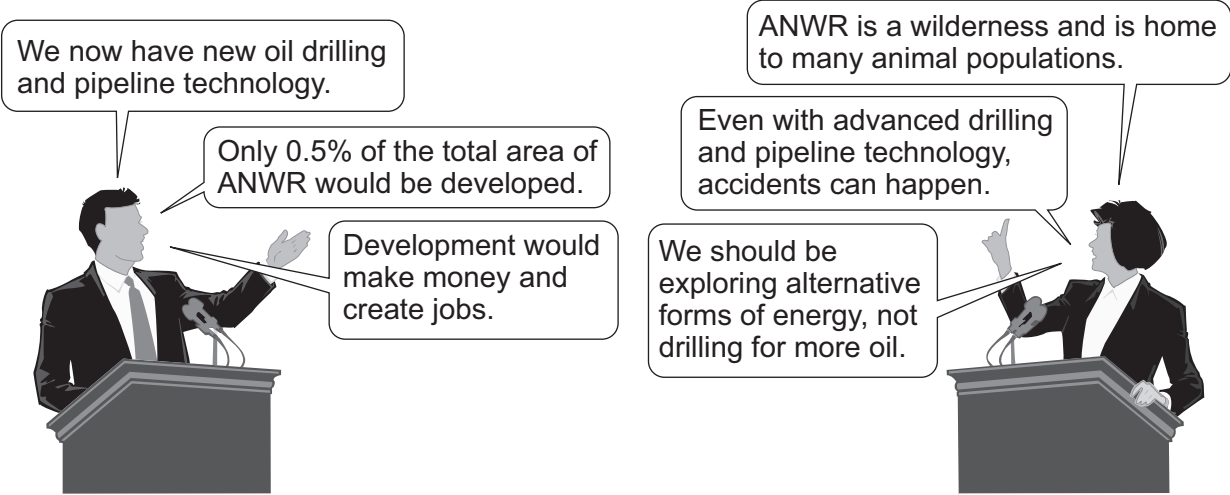
(4 marks)



8 (b) Study **Figure 15**. **Figure 15** shows information about the issue of development in a cold environment.

Figure 15

The Arctic National Wildlife Refuge (ANWR) is a protected area of Alaska (United States). Some people want more development of the oil industry in a part of the ANWR. Some people do not want this development.



More development of cold environments should be allowed.

Do you agree?

Tick the box of your choice.

YES NO

Give reasons for your choice. Use **Figure 15** and your own knowledge.

.....

.....

.....

.....

.....

.....

.....

.....

.....

.....

Turn over ▶



.....

.....

.....

.....

(6 marks)
SPaG: 3 marks

Extra space

.....

.....

.....

.....

| |
|-----------|
| |
| 14 |

END OF QUESTIONS

ACKNOWLEDGEMENT OF COPYRIGHT-HOLDERS AND PUBLISHERS

Permission to reproduce all copyright material has been applied for. In some cases, efforts to contact copyright-holders have been unsuccessful and AQA will be happy to rectify any omissions of acknowledgements in future papers if notified.

- Figure 3: © Headwaters Economics <http://www.headwaterseconomics.org/wildfire>
- Figure 4: Wildfire Awareness Week, Monday May 3 2010 <http://wildfiretoday.com/tag/prevention>
- Figures 5 and 6: United Nations
- Figures 10 and 11: Copyright Guardian News & Media Ltd 2005
- Figure 12: Woods Hole Research Centre and WWF
- Figure 14: © coolantartica.com

Copyright © 2013 AQA and its licensors. All rights reserved.

